



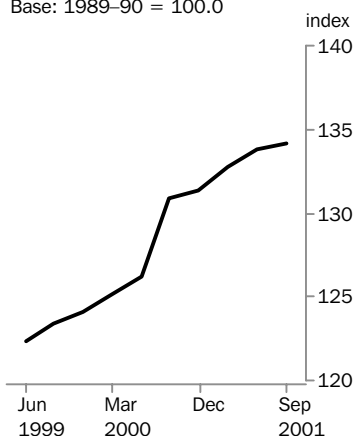
CONSUMER PRICE INDEX AUSTRALIA

EMBARGO: 11:30AM (CANBERRA TIME) WED 24 OCT 2001

SEPTEMBER QTR KEY FIGURES

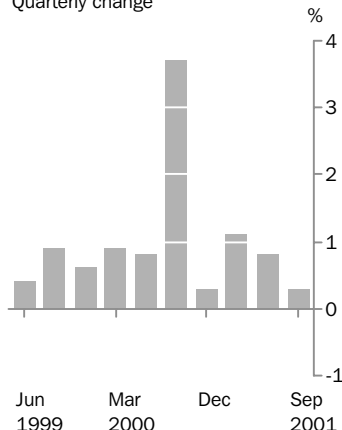
All Groups

Base: 1989-90 = 100.0



All Groups

Quarterly change



	% change Jun Qtr 2001 to Sep Qtr 2001	% change Sep Qtr 2000 to Sep Qtr 2001
Weighted average of eight capital cities		
Food	0.7	5.6
Alcohol and tobacco	1.1	5.9
Clothing and footwear	-1.2	-2.1
Housing	1.5	2.4
Household furnishings, supplies and services	-0.3	2.1
Health	-0.1	2.7
Transportation	-1.7	1.0
Communication	-0.2	-1.9
Recreation	0.9	0.5
Education	0.0	4.3
Miscellaneous	1.0	4.2
All groups	0.3	2.5
All groups excluding Housing	0.0	2.6

SEPTEMBER QTR KEY POINTS

THE ALL GROUPS CPI

- rose 0.3% in the September quarter 2001, compared with an increase of 0.8% in the June quarter 2001.
- rose 2.5% between the September quarters 2000 and 2001. This result is due to ongoing price movements over the last 12 months and is no longer affected by the direct or first round effects of The New Tax System, in particular, the introduction of the goods and services tax.

OVERVIEW OF CPI MOVEMENTS

- contributing most to the overall increase this quarter were rises in the cost of house purchase (+0.9%), fruit (+6.3%), property rates and charges (+4.8%), overseas holiday travel and accommodation (+2.9%), electricity (+3.0%), tobacco (+1.6%), rents (+0.7%) and insurance services (+2.7%).
- partially offsetting the above were falls in the cost of automotive fuel (-8.3%), vegetables (-8.3%), women's outerwear (-2.8%) and pharmaceuticals (-3.6%).
- contributing most to the annual increase were rises in the cost of tobacco (+10.1%), motor vehicles (+3.9%), rents (+3.1%), motor vehicle repair and servicing (+6.6%), take away and fast foods (+4.6%) and overseas holiday travel and accommodation (+6.3%). Partially offsetting these increases were falls in the cost of automotive fuel (-7.6%), domestic holiday travel and accommodation (-7.3%), women's outerwear (-4.4%) and telecommunication (-2.1%).

- For further information about these and related statistics, contact Steve Whennan on Canberra 02 6252 6251, or the National Information and Referral Service on 1300 135 070.

NOTES

FORTHCOMING ISSUES

<i>ISSUE</i>	<i>RELEASE DATE</i>
December 2001	23 January 2002
March 2002	24 April 2002

CHANGES IN THIS ISSUE

The series 'All Groups excluding Housing' for Hong Kong, shown in the International Comparisons Tables 9 and 10, has been revised. The Census and Statistics Department of Hong Kong has advised that the CPI for Hong Kong has been rebased using updated household expenditure patterns obtained from the Household Expenditure Survey conducted during October 1999 to September 2000. A new 1999/00-based CPI series has replaced the previous 1994/95-based CPI series for Hong Kong. One of the results is that there has been a slight change in the coverage of the 'Housing' group in the Hong Kong CPI and hence the 'All Groups excluding Housing' index number series.

CHANGES IN NEXT ISSUE

Commencing with the December quarter 2001 issue, the graphs appearing on the front page of this publication will change as follows:

- the first graph showing the All Groups index number series will be dropped;
- the time period displayed in the second graph showing quarterly percentage change in the All Groups index number will be extended to almost ten years;
- a new graph will be introduced showing the contribution of each CPI group to the change in the All Groups index number for the current quarter.

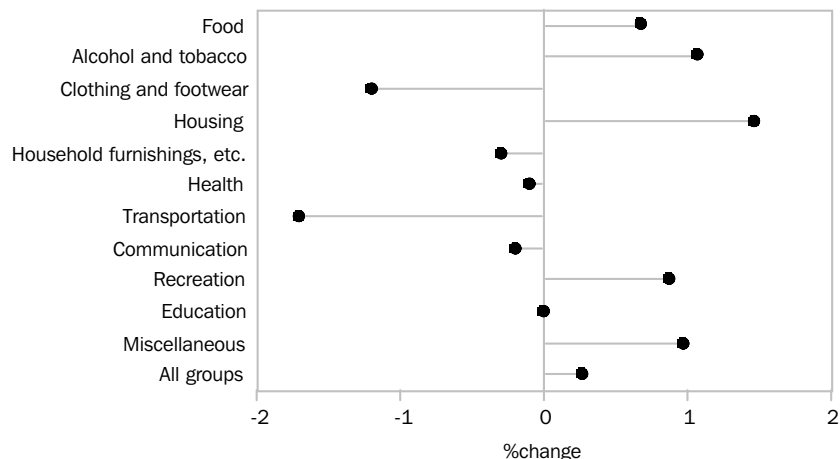
ROUNDING

Any discrepancies between totals and sums of components in this publication are due to rounding.

Dennis Trewin
Australian Statistician

ANALYSES AND COMMENTS

CPI GROUPS, WEIGHTED AVERAGE OF EIGHT CAPITAL CITIES: PERCENTAGE CHANGE FROM PREVIOUS QUARTER



MAIN CONTRIBUTIONS TO CHANGE

The discussion of the CPI groups below is ordered in terms of their significance to the change in All groups index points (see Table 6).

HOUSING: (+1.5%)

The rise in housing costs this quarter was mainly due to increases in house purchase (+0.9%), property rates and charges (+4.8%), electricity (+3.0%), rents (+0.7%), gas and other household fuels (+4.3%), water and sewerage (+2.9%) and house repairs and maintenance (+1.3%). The increase in electricity was particularly affected by the discontinuation of the Winter Power Bonus in Victoria (see note on page 2 of the June quarter 2001 issue of this publication). There were no falls.

Over the twelve months to September quarter 2001, housing costs rose 2.4%.

TRANSPORTATION: (-1.7%)

The fall in transportation costs this quarter was solely attributable to the decrease in the price of automotive fuel (-8.3%). Petrol prices rose in April (+0.6%) and May (+3.3%) before falling in the three consecutive months of June (-7.3%), July (-6.3%) and August (-0.1%), and then rising in September (+5.8%). Partially offsetting this quarter's decrease were price rises in motor vehicle repair and servicing (+1.4%), other motoring charges (+1.7%), urban transport fares (+2.3%) and motor vehicles (+0.4%).

Over the twelve months to September quarter 2001, transportation costs rose 1.0%.

FOOD: (+0.7%)

The rise in food costs this quarter was mainly attributable to increases in the price of fruit (+6.3%), bread (+2.4%), beef and veal (+3.3%) and take away and fast foods (+0.7%). Partially offsetting these increases were falls in the cost of vegetables (-8.3%) and soft drinks, waters and juices (-1.8%).

Over the twelve months to September quarter 2001, food costs rose 5.6%.

RECREATION: (+0.9%)

The rise in recreation costs this quarter was mainly the result of the seasonal increase in the price of overseas holiday travel and accommodation (+2.9%) and a rise in the cost of pets, pet foods and supplies (+5.5%). There were no significant falls.

Over the twelve months to September quarter 2001, recreation costs rose 0.5%.

ANALYSES AND COMMENTS

MAIN CONTRIBUTIONS TO CHANGE *continued*

ALCOHOL AND TOBACCO: (+1.1%) The rise in alcohol and tobacco costs this quarter was mainly due to increases in the price of tobacco (+1.6%), wine (+0.9%) and beer (+0.7%). There were no falls this quarter.

Over the twelve months to September quarter 2001, alcohol and tobacco costs rose 5.9%.

CLOTHING AND FOOTWEAR: (-1.2%) The fall in clothing and footwear costs this quarter was mainly attributable to a fall in the price of women's outerwear (-2.8%) and children's and infants' clothing (-2.7%). There were no other significant price movements.

Over the twelve months to September quarter 2001, clothing and footwear costs fell 2.1%.

MISCELLANEOUS: (+1.0%) The rise in miscellaneous costs this quarter was mainly due to increases in the price of insurance services (+2.7%) and toiletries and personal care products (+1.5%). Partially offsetting these increases was a fall in the cost of child care (-6.4%) due to an increase in Commonwealth child care benefits.

Over the twelve months to September quarter 2001, miscellaneous costs rose 4.2%.

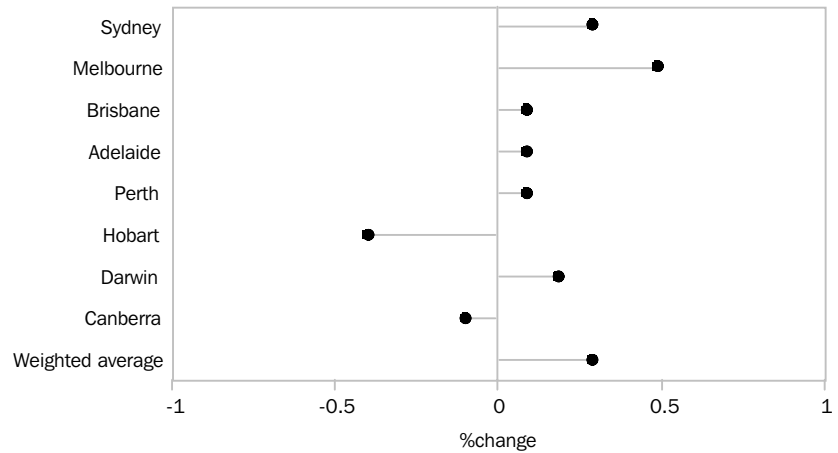
HOUSEHOLD FURNISHINGS, SUPPLIES AND SERVICES: (-0.3%) The fall in household furnishings, supplies and services costs this quarter was mainly attributable to a fall in the price of towels and linen (-3.5%), furniture (-0.8%) and glassware, tableware and household utensils (-2.7%). The most significant increase was in other household supplies (+1.0%).

Over the twelve months to September quarter 2001, household furnishings, supplies and services costs rose 2.1%.

ANALYSES AND COMMENTS

CAPITAL CITIES COMPARISON

ALL GROUPS: PERCENTAGE CHANGE FROM PREVIOUS QUARTER



At the All groups level, the September quarter 2001 CPI rose in six out of the eight capital cities. The CPI rose in Melbourne (+0.5%), Sydney (+0.3%), Darwin (+0.2%), Brisbane (+0.1%), Adelaide (+0.1%) and Perth (+0.1%). Hobart (-0.4%) and Canberra (-0.1%) recorded falls.

The high result in Melbourne was mainly due to that city recording the highest increases in housing and alcohol and tobacco and equal highest increases in food and health costs. Hobart had the smallest increase in alcohol and tobacco and housing and the largest fall in health costs.

Over the 12 months to September quarter 2001, the All groups CPI rose in each of the eight capital cities. The increases ranged from 1.1% in Hobart to 2.9% in Sydney.

CPI, All groups index numbers(a) and percentage changes

	INDEX NUMBER(a)	PERCENTAGE CHANGE BETWEEN	
		Sep Qtr 2001	Jun Qtr 2001 and Sep Qtr 2001
Sydney	135.4	0.3	2.9
Melbourne	133.6	0.5	2.5
Brisbane	134.2	0.1	2.2
Adelaide	135.3	0.1	2.3
Perth	131.5	0.1	2.3
Hobart	132.8	-0.4	1.1
Darwin	132.5	0.2	1.9
Canberra	133.2	-0.1	1.9
Weighted average of eight capital cities	134.2	0.3	2.5

(a) Base of each index: 1989-90 = 100.0

ALL GROUPS, Index Numbers(a)

<i>Period</i>	<i>Sydney</i>	<i>Melbourne</i>	<i>Brisbane</i>	<i>Adelaide</i>	<i>Perth</i>	<i>Hobart</i>	<i>Darwin</i>	<i>Canberra</i>	<i>Weighted average of eight capital cities</i>
1997-1998	120.5	119.8	121.6	121.6	118.0	121.3	121.3	120.4	120.3
1998-1999	122.5	120.9	122.9	123.2	120.1	122.5	122.4	121.5	121.8
1999-2000	125.4	124.1	125.0	126.3	122.9	124.8	124.2	124.2	124.7
2000-2001	133.2	131.6	132.4	133.5	129.6	132.0	130.9	131.9	132.2
1997									
September	119.8	119.5	120.7	121.2	117.5	120.6	121.0	119.8	119.7
December	120.1	119.8	121.4	121.2	117.6	121.2	120.8	119.8	120.0
1998									
March	120.7	119.6	121.9	121.7	118.0	121.5	121.5	120.6	120.3
June	121.4	120.3	122.3	122.4	118.9	122.0	121.8	121.2	121.0
September	121.9	120.4	122.5	123.0	119.6	122.8	122.1	121.3	121.3
December	122.4	120.8	123.0	123.6	120.2	122.7	122.7	121.7	121.9
1999									
March	122.6	121.0	122.8	122.7	119.8	122.1	122.1	121.4	121.8
June	123.0	121.5	123.1	123.6	120.8	122.5	122.7	121.5	122.3
September	124.1	122.7	124.0	125.1	121.9	123.3	122.9	122.4	123.4
December	124.7	123.5	124.1	125.7	122.7	124.0	123.6	123.7	124.1
2000									
March	125.8	124.7	125.5	126.8	123.1	125.3	124.4	124.9	125.2
June	127.0	125.6	126.4	127.6	124.0	126.5	125.7	125.9	126.2
September	131.6	130.4	131.3	132.3	128.6	131.3	130.0	130.7	130.9
December	132.2	130.8	131.6	132.5	128.8	131.2	130.6	131.1	131.3
2001									
March	134.0	132.2	132.7	134.1	129.6	132.1	130.7	132.2	132.7
June	135.0	133.0	134.0	135.1	131.4	133.4	132.2	133.4	133.8
September	135.4	133.6	134.2	135.3	131.5	132.8	132.5	133.2	134.2

(a) Base of each index: 1989-90 = 100.0

ALL GROUPS, Percentage Changes

Period	Sydney	Melbourne	Brisbane	Adelaide	Perth	Hobart	Darwin	Canberra	Weighted average of eight capital cities
PERCENTAGE CHANGE (from previous financial year)									
1997-1998	0.1	-0.1	0.5	-0.6	-0.3	-0.1	-0.2	-0.7	0.0
1998-1999	1.7	0.9	1.1	1.3	1.8	1.0	0.9	0.9	1.2
1999-2000	2.4	2.6	1.7	2.5	2.3	1.9	1.5	2.2	2.4
2000-2001	6.2	6.0	5.9	5.7	5.5	5.8	5.4	6.2	6.0
PERCENTAGE CHANGE (from corresponding quarter of previous year)									
1997									
September	-0.3	-0.1	0.1	-0.8	-0.7	-0.4	-0.5	-1.3	-0.3
December	-0.2	-0.1	0.5	-1.1	-0.7	-0.1	-0.7	-1.3	-0.2
1998									
March	0.1	-0.4	0.3	-0.7	-0.2	-0.3	-0.1	-0.7	-0.2
June	1.0	0.3	1.0	0.4	0.7	0.6	0.2	0.7	0.7
September	1.8	0.8	1.5	1.5	1.8	1.8	0.9	1.3	1.3
December	1.9	0.8	1.3	2.0	2.2	1.2	1.6	1.6	1.6
1999									
March	1.6	1.2	0.7	0.8	1.5	0.5	0.5	0.7	1.2
June	1.3	1.0	0.7	1.0	1.6	0.4	0.7	0.2	1.1
September	1.8	1.9	1.2	1.7	1.9	0.4	0.7	0.9	1.7
December	1.9	2.2	0.9	1.7	2.1	1.1	0.7	1.6	1.8
2000									
March	2.6	3.1	2.2	3.3	2.8	2.6	1.9	2.9	2.8
June	3.3	3.4	2.7	3.2	2.6	3.3	2.4	3.6	3.2
September	6.0	6.3	5.9	5.8	5.5	6.5	5.8	6.8	6.1
December	6.0	5.9	6.0	5.4	5.0	5.8	5.7	6.0	5.8
2001									
March	6.5	6.0	5.7	5.8	5.3	5.4	5.1	5.8	6.0
June	6.3	5.9	6.0	5.9	6.0	5.5	5.2	6.0	6.0
September	2.9	2.5	2.2	2.3	2.3	1.1	1.9	1.9	2.5
PERCENTAGE CHANGE (from previous quarter)									
1997									
September	-0.3	-0.3	-0.3	-0.6	-0.5	-0.6	-0.4	-0.5	-0.4
December	0.3	0.3	0.6	0.0	0.1	0.5	-0.2	0.0	0.3
1998									
March	0.5	-0.2	0.4	0.4	0.3	0.2	0.6	0.7	0.3
June	0.6	0.6	0.3	0.6	0.8	0.4	0.2	0.5	0.6
September	0.4	0.1	0.2	0.5	0.6	0.7	0.2	0.1	0.2
December	0.4	0.3	0.4	0.5	0.5	-0.1	0.5	0.3	0.5
1999									
March	0.2	0.2	-0.2	-0.7	-0.3	-0.5	-0.5	-0.2	-0.1
June	0.3	0.4	0.2	0.7	0.8	0.3	0.5	0.1	0.4
September	0.9	1.0	0.7	1.2	0.9	0.7	0.2	0.7	0.9
December	0.5	0.7	0.1	0.5	0.7	0.6	0.6	1.1	0.6
2000									
March	0.9	1.0	1.1	0.9	0.3	1.0	0.6	1.0	0.9
June	1.0	0.7	0.7	0.6	0.7	1.0	1.0	0.8	0.8
September	3.6	3.8	3.9	3.7	3.7	3.8	3.4	3.8	3.7
December	0.5	0.3	0.2	0.2	0.2	-0.1	0.5	0.3	0.3
2001									
March	1.4	1.1	0.8	1.2	0.6	0.7	0.1	0.8	1.1
June	0.7	0.6	1.0	0.7	1.4	1.0	1.1	0.9	0.8
September	0.3	0.5	0.1	0.1	0.1	-0.4	0.2	-0.1	0.3

CPI GROUPS, Weighted Average of Eight Capital Cities—Index Numbers(a)

<i>Period</i>	<i>Food</i>	<i>Alcohol and tobacco</i>	<i>Clothing and footwear</i>	<i>Housing</i>	<i>Household furnishings, supplies and services</i>	<i>Health</i>
1997-1998	121.8	164.6	107.4	94.5	113.8	165.4
1998-1999	126.5	168.7	106.7	95.8	113.7	163.4
1999-2000	129.2	175.2	105.5	99.9	113.3	158.7
2000-2001	135.6	194.7	112.5	107.9	117.3	164.3
1997						
September	120.8	161.9	107.1	95.9	113.4	158.5
December	121.1	164.3	107.8	94.2	113.8	164.6
1998						
March	122.1	165.4	107.4	93.4	113.8	167.1
June	123.1	166.7	107.3	94.5	114.0	171.4
September	124.7	167.5	107.0	94.8	113.9	172.4
December	126.0	167.9	106.9	95.5	114.1	171.3
1999						
March	127.5	169.2	106.3	96.2	113.0	154.6
June	127.8	170.3	106.7	96.6	113.6	155.2
September	128.5	170.8	106.2	98.1	113.0	156.8
December	128.9	174.2	105.2	99.6	113.3	156.5
2000						
March	129.1	177.1	104.8	100.7	112.8	160.2
June	130.2	178.6	105.7	101.2	114.1	161.3
September	132.4	190.2	113.5	107.4	116.4	162.1
December	133.4	192.1	113.1	107.7	116.3	161.9
2001						
March	137.6	197.1	110.7	108.2	117.2	166.4
June	138.8	199.4	112.5	108.4	119.3	166.7
September	139.8	201.5	111.1	110.0	118.9	166.5

CPI GROUPS, Weighted Average of Eight Capital Cities—Index Numbers(a) *continued*

<i>Period</i>	<i>Transportation</i>	<i>Communication</i>	<i>Recreation</i>	<i>Education</i>	<i>Miscellaneous</i>	<i>All groups</i>
1997-1998	123.5	106.6	117.8	165.6	138.5	120.3
1998-1999	122.1	102.9	119.4	174.1	143.5	121.8
1999-2000	128.9	97.8	120.4	182.4	153.2	124.7
2000-2001	137.0	104.7	124.6	191.4	166.0	132.2
1997						
September	124.4	106.5	116.7	160.8	137.0	119.7
December	124.0	106.8	117.1	160.8	138.1	120.0
1998						
March	122.9	106.8	118.6	170.3	138.8	120.3
June	122.8	106.1	118.7	170.3	140.0	121.0
September	122.3	105.2	118.1	170.3	142.1	121.3
December	121.9	104.1	119.3	170.3	143.0	121.9
1999						
March	121.2	101.2	120.2	177.8	144.0	121.8
June	122.9	100.9	119.8	177.8	145.0	122.3
September	126.9	97.7	120.4	177.8	147.1	123.4
December	126.4	97.3	121.0	177.8	150.2	124.1
2000						
March	130.1	97.5	120.2	187.0	155.3	125.2
June	132.1	98.8	120.0	187.0	160.3	126.2
September	135.6	105.6	124.8	187.3	163.5	130.9
December	136.4	104.9	124.6	187.5	165.0	131.3
2001						
March	136.7	104.4	124.5	195.4	166.7	132.7
June	139.4	103.8	124.3	195.4	168.7	133.8
September	137.0	103.6	125.4	195.4	170.4	134.2

(a) Base of each index: 1989-90 = 100.0

CPI GROUPS, Weighted Average of Eight Capital Cities—Percentage Changes

<i>Period</i>	<i>Food</i>	<i>Alcohol and tobacco</i>	<i>Clothing and footwear</i>	<i>Housing</i>	<i>Household furnishings, supplies and services</i>	<i>Health</i>
PERCENTAGE CHANGE (from previous financial year)						
1997-1998	1.8	2.0	0.1	-7.0	0.3	3.6
1998-1999	3.9	2.5	-0.7	1.4	-0.1	-1.2
1999-2000	2.1	3.9	-1.1	4.3	-0.4	-2.9
2000-2001	5.0	11.1	6.6	8.0	3.5	3.5

PERCENTAGE CHANGE (from corresponding quarter of previous year)						
1997						
September	2.1	0.9	-0.1	-9.6	0.3	2.9
December	1.4	1.9	0.3	-8.7	0.2	5.2
1998						
March	1.6	2.3	0.4	-6.8	0.3	3.3
June	1.9	2.8	0.0	-2.5	0.1	3.0
September	3.2	3.5	-0.1	-1.1	0.4	8.8
December	4.0	2.2	-0.8	1.4	0.3	4.1
1999						
March	4.4	2.3	-1.0	3.0	-0.7	-7.5
June	3.8	2.2	-0.6	2.2	-0.4	-9.5
September	3.0	2.0	-0.7	3.5	-0.8	-9.0
December	2.3	3.8	-1.6	4.3	-0.7	-8.6
2000						
March	1.3	4.7	-1.4	4.7	-0.2	3.6
June	1.9	4.9	-0.9	4.8	0.4	3.9
September	3.0	11.4	6.9	9.5	3.0	3.4
December	3.5	10.3	7.5	8.1	2.6	3.5
2001						
March	6.6	11.3	5.6	7.4	3.9	3.9
June	6.6	11.6	6.4	7.1	4.6	3.3
September	5.6	5.9	-2.1	2.4	2.1	2.7

PERCENTAGE CHANGE (from previous quarter)						
1997						
September	0.0	-0.1	-0.2	-1.0	-0.4	-4.7
December	0.2	1.5	0.7	-1.8	0.4	3.8
1998						
March	0.8	0.7	-0.4	-0.8	0.0	1.5
June	0.8	0.8	-0.1	1.2	0.2	2.6
September	1.3	0.5	-0.3	0.3	-0.1	0.6
December	1.0	0.2	-0.1	0.7	0.2	-0.6
1999						
March	1.2	0.8	-0.6	0.7	-1.0	-9.7
June	0.2	0.7	0.4	0.4	0.5	0.4
September	0.5	0.3	-0.5	1.6	-0.5	1.0
December	0.3	2.0	-0.9	1.5	0.3	-0.2
2000						
March	0.2	1.7	-0.4	1.1	-0.4	2.4
June	0.9	0.8	0.9	0.5	1.2	0.7
September	1.7	6.5	7.4	6.1	2.0	0.5
December	0.8	1.0	-0.4	0.3	-0.1	-0.1
2001						
March	3.1	2.6	-2.1	0.5	0.8	2.8
June	0.9	1.2	1.6	0.2	1.8	0.2
September	0.7	1.1	-1.2	1.5	-0.3	-0.1

<i>Period</i>	<i>Transportation</i>	<i>Communication</i>	<i>Recreation</i>	<i>Education</i>	<i>Miscellaneous</i>	<i>All groups</i>
---------------	-----------------------	----------------------	-------------------	------------------	----------------------	-------------------

PERCENTAGE CHANGE (from previous financial year)

1997-1998	-0.6	0.1	2.4	6.2	3.8	0.0
1998-1999	-1.1	-3.5	1.4	5.1	3.6	1.2
1999-2000	5.6	-5.0	0.8	4.8	6.8	2.4
2000-2001	6.3	7.1	3.5	4.9	8.4	6.0

PERCENTAGE CHANGE (from corresponding quarter of previous year)

1997						
September	0.8	-0.2	2.4	6.4	4.5	-0.3
December	-0.4	0.5	2.1	6.4	4.3	-0.2
1998						
March	-1.8	0.4	2.4	5.9	3.4	-0.2
June	-0.9	-0.3	2.8	5.9	3.0	0.7
September	-1.7	-1.2	1.2	5.9	3.7	1.3
December	-1.7	-2.5	1.9	5.9	3.5	1.6
1999						
March	-1.4	-5.2	1.3	4.4	3.7	1.2
June	0.1	-4.9	0.9	4.4	3.6	1.1
September	3.8	-7.1	1.9	4.4	3.5	1.7
December	3.7	-6.5	1.4	4.4	5.0	1.8
2000						
March	7.3	-3.7	0.0	5.2	7.8	2.8
June	7.5	-2.1	0.2	5.2	10.6	3.2
September	6.9	8.1	3.7	5.3	11.1	6.1
December	7.9	7.8	3.0	5.5	9.9	5.8
2001						
March	5.1	7.1	3.6	4.5	7.3	6.0
June	5.5	5.1	3.6	4.5	5.2	6.0
September	1.0	-1.9	0.5	4.3	4.2	2.5

PERCENTAGE CHANGE (from previous quarter)

1997						
September	0.4	0.1	1.0	0.0	0.8	-0.4
December	-0.3	0.3	0.3	0.0	0.8	0.3
1998						
March	-0.9	0.0	1.3	5.9	0.5	0.3
June	-0.1	-0.7	0.1	0.0	0.9	0.6
September	-0.4	-0.8	-0.5	0.0	1.5	0.2
December	-0.3	-1.0	1.0	0.0	0.6	0.5
1999						
March	-0.6	-2.8	0.8	4.4	0.7	-0.1
June	1.4	-0.3	-0.3	0.0	0.7	0.4
September	3.3	-3.2	0.5	0.0	1.4	0.9
December	-0.4	-0.4	0.5	0.0	2.1	0.6
2000						
March	2.9	0.2	-0.7	5.2	3.4	0.9
June	1.5	1.3	-0.2	0.0	3.2	0.8
September	2.6	6.9	4.0	0.2	2.0	3.7
December	0.6	-0.7	-0.2	0.1	0.9	0.3
2001						
March	0.2	-0.5	-0.1	4.2	1.0	1.1
June	2.0	-0.6	-0.2	0.0	1.2	0.8
September	-1.7	-0.2	0.9	0.0	1.0	0.3

CPI GROUPS, Index Numbers(a)

Quarters	Sydney	Melbourne	Brisbane	Adelaide	Perth	Hobart	Darwin	Canberra	Weighted average of eight capital cities
FOOD									
1999									
September	129.4	127.8	127.0	129.7	129.4	126.3	124.3	127.7	128.5
December	129.6	128.6	126.4	130.4	129.3	127.5	125.9	130.9	128.9
2000									
March	129.6	128.3	127.5	131.2	130.4	127.8	127.4	130.6	129.1
June	130.7	130.0	129.1	131.9	129.7	129.1	130.0	131.1	130.2
September	133.4	131.6	131.4	133.8	132.9	130.9	131.1	134.1	132.4
December	134.6	132.8	131.9	134.2	132.7	132.0	132.5	135.9	133.4
2001									
March	139.2	136.8	137.1	139.4	135.2	134.3	134.8	139.4	137.6
June	139.3	138.8	138.5	139.4	138.1	136.0	137.0	141.0	138.8
September	139.9	140.1	139.7	140.5	139.1	135.7	136.2	141.6	139.8
ALCOHOL AND TOBACCO									
1999									
September	175.4	169.4	170.6	174.4	161.8	158.1	163.2	162.9	170.8
December	178.5	173.7	173.4	177.8	164.6	163.3	166.6	165.1	174.2
2000									
March	181.3	176.5	176.8	181.6	166.9	167.2	169.6	169.5	177.1
June	183.2	177.3	177.8	182.5	169.5	169.9	171.5	170.3	178.6
September	195.9	187.6	190.8	193.4	179.8	179.8	182.6	182.3	190.2
December	198.2	189.1	192.0	196.0	182.7	181.6	183.2	183.7	192.1
2001									
March	203.3	194.8	195.5	200.5	187.7	185.4	186.8	187.6	197.1
June	204.9	198.0	198.9	203.3	188.7	188.6	190.6	189.1	199.4
September	206.8	200.7	200.2	205.9	190.7	189.4	192.1	190.1	201.5
CLOTHING AND FOOTWEAR									
1999									
September	106.1	107.5	104.7	104.8	105.1	104.5	103.3	107.2	106.2
December	105.2	107.1	103.2	102.5	103.6	103.9	103.0	106.2	105.2
2000									
March	105.0	106.9	102.6	101.9	102.5	104.9	101.1	105.5	104.8
June	106.0	106.9	102.9	104.0	105.6	105.0	102.0	106.9	105.7
September	112.5	116.2	110.4	113.6	112.7	112.8	108.4	113.7	113.5
December	113.3	115.4	109.7	111.2	111.0	112.9	108.0	114.0	113.1
2001									
March	112.3	112.5	102.9	110.5	108.6	110.7	103.6	112.9	110.7
June	114.0	113.2	107.0	112.3	111.2	112.2	105.4	114.5	112.5
September	113.1	112.7	105.8	108.4	107.8	109.3	107.2	112.9	111.1
HOUSING									
1999									
September	105.8	88.8	102.8	95.0	93.1	96.9	117.4	96.0	98.1
December	107.3	90.4	103.9	96.9	95.1	97.4	117.8	97.2	99.6
2000									
March	108.6	91.7	105.1	97.9	95.1	98.8	117.5	99.0	100.7
June	109.6	91.7	105.4	98.3	95.4	99.2	118.2	100.6	101.2
September	115.8	97.8	112.0	103.9	101.3	105.5	123.9	106.7	107.4
December	116.1	98.3	112.7	103.9	101.3	105.8	123.9	107.1	107.7
2001									
March	116.5	99.1	112.8	104.4	101.1	106.9	123.3	108.0	108.2
June	117.1	98.8	112.6	104.9	101.6	107.2	122.4	108.9	108.4
September	118.2	101.4	113.6	106.8	102.5	107.4	123.2	110.7	110.0

Quarters	Sydney	Melbourne	Brisbane	Adelaide	Perth	Hobart	Darwin	Canberra	Weighted average of eight capital cities
HOUSEHOLD FURNISHINGS, SUPPLIES AND SERVICES									
1999									
September	110.7	114.3	115.2	112.5	113.0	119.3	105.7	115.7	113.0
December	111.2	114.4	114.9	112.7	113.5	119.1	106.7	116.9	113.3
2000									
March	110.5	114.3	114.4	112.9	112.4	120.2	106.8	116.0	112.8
June	112.0	115.7	115.6	113.4	113.6	121.2	107.5	117.7	114.1
September	114.0	117.9	119.0	116.0	114.7	124.5	109.5	120.9	116.4
December	114.3	117.1	119.4	115.8	115.3	124.6	110.4	120.3	116.3
2001									
March	115.5	117.8	120.7	117.4	114.5	125.6	110.6	121.7	117.2
June	117.9	119.5	122.3	119.3	117.2	126.6	110.6	123.0	119.3
September	117.5	119.0	121.8	120.6	116.2	127.3	112.0	122.8	118.9
HEALTH									
1999									
September	147.9	166.0	150.9	164.5	151.4	173.3	145.9	152.1	156.8
December	148.0	165.9	150.5	163.7	150.5	172.0	145.8	152.0	156.5
2000									
March	152.0	170.2	153.9	166.3	153.5	175.1	147.7	155.9	160.2
June	152.7	170.9	155.0	167.9	154.8	177.7	149.5	157.9	161.3
September	153.4	171.9	156.0	168.5	155.5	178.0	151.3	158.1	162.1
December	153.0	172.8	155.7	167.6	154.7	177.4	152.4	157.1	161.9
2001									
March	157.2	177.8	160.4	170.7	158.7	181.5	154.9	162.5	166.4
June	157.7	177.7	161.3	171.3	158.9	181.4	155.1	163.1	166.7
September	157.0	177.9	161.5	170.9	158.9	180.3	154.4	162.9	166.5
TRANSPORTATION									
1999									
September	127.9	125.9	125.5	127.8	127.4	123.1	122.6	131.6	126.9
December	127.3	125.2	124.8	127.4	127.0	123.8	123.2	131.4	126.4
2000									
March	131.1	129.2	128.5	130.4	130.4	126.6	126.2	135.3	130.1
June	133.5	131.2	130.5	131.9	131.7	129.3	129.3	136.4	132.1
September	136.7	134.5	134.6	136.8	136.0	133.3	130.6	138.6	135.6
December	138.0	135.6	134.1	137.6	136.3	130.4	131.1	139.3	136.4
2001									
March	138.4	136.2	134.5	137.0	136.0	131.4	131.9	138.8	136.7
June	140.8	138.6	137.3	140.4	139.6	134.6	135.4	142.6	139.4
September	139.1	135.6	136.1	136.4	136.8	131.5	132.1	138.2	137.0
COMMUNICATION									
1999									
September	97.5	97.5	100.2	97.7	96.6	98.3	91.4	97.1	97.7
December	97.3	97.1	99.9	97.2	96.0	97.9	91.1	97.0	97.3
2000									
March	97.7	97.2	100.2	97.0	95.8	98.0	91.1	97.2	97.5
June	98.9	98.5	101.5	98.7	97.1	99.5	92.0	98.3	98.8
September	105.8	105.4	108.6	105.5	103.7	106.3	98.3	105.1	105.6
December	105.1	104.6	108.0	105.0	102.8	105.8	97.6	104.4	104.9
2001									
March	104.5	104.3	107.4	104.3	102.2	105.2	97.1	103.9	104.4
June	103.6	103.7	107.0	103.9	102.0	104.7	96.6	103.3	103.8
September	103.5	103.5	106.7	103.6	101.8	104.1	96.5	102.6	103.6

Quarters	Sydney	Melbourne	Brisbane	Adelaide	Perth	Hobart	Darwin	Canberra	Weighted average of eight capital cities
RECREATION									
1999									
September	119.9	122.3	121.0	119.7	118.0	119.0	110.8	117.6	120.4
December	121.0	122.6	121.5	119.7	119.5	119.0	109.2	118.9	121.0
2000									
March	119.7	122.7	121.0	118.5	116.2	118.6	108.3	118.2	120.2
June	119.7	122.4	120.3	118.6	117.4	118.5	107.3	117.9	120.0
September	124.7	127.8	124.6	122.7	120.9	124.1	112.7	122.9	124.8
December	124.2	127.4	124.9	123.4	121.1	123.3	113.9	122.0	124.6
2001									
March	125.2	126.1	124.5	123.0	122.0	120.9	110.2	120.3	124.5
June	125.3	125.1	124.8	122.5	123.1	121.5	112.1	120.0	124.3
September	126.9	125.7	124.4	123.1	125.2	121.2	115.5	121.1	125.4
EDUCATION									
1999									
September	174.1	171.5	196.4	210.8	176.4	198.8	148.1	175.7	177.8
December	174.1	171.5	196.4	210.8	176.4	198.8	148.1	175.7	177.8
2000									
March	184.9	179.4	205.5	220.7	187.5	206.2	153.1	181.5	187.0
June	184.9	179.4	205.5	220.7	187.5	206.2	153.1	181.5	187.0
September	185.3	179.7	205.8	220.9	187.5	206.5	153.1	181.8	187.3
December	185.6	179.8	205.8	220.9	187.5	206.5	153.1	181.8	187.5
2001									
March	194.2	187.6	213.2	230.9	193.5	215.1	157.2	188.4	195.4
June	194.2	187.6	213.2	230.9	193.5	215.1	157.2	188.4	195.4
September	194.3	187.7	213.3	231.0	193.5	215.0	157.2	188.4	195.4
MISCELLANEOUS									
1999									
September	150.7	139.7	153.7	143.2	149.9	147.2	139.3	167.3	147.1
December	152.9	143.3	156.7	147.4	154.0	150.7	142.8	172.1	150.2
2000									
March	159.1	147.8	163.0	150.6	157.2	153.6	145.8	178.2	155.3
June	165.0	153.4	167.2	153.9	160.6	157.4	149.2	182.1	160.3
September	167.3	159.3	166.6	157.8	161.7	162.4	154.7	188.6	163.5
December	169.4	159.4	168.1	158.3	164.7	163.6	156.9	192.7	165.0
2001									
March	172.3	160.2	168.4	159.9	166.8	164.5	159.0	194.8	166.7
June	176.7	159.9	171.6	161.2	168.4	165.1	162.0	193.6	168.7
September	178.7	161.4	173.6	163.5	170.4	164.2	160.2	191.2	170.4

(a) Base of each index: 1989-90 = 100.0

Group, sub-group and expenditure class	Sydney	Melbourne	Brisbane	Adelaide	Perth	Hobart	Darwin	Canberra	Weighted average of eight capital cities
Food	0.10	0.23	0.19	0.19	0.15	-0.06	-0.12	0.10	0.16
Dairy and related products	0.03	0.04	0.02	0.06	0.07	0.04	0.08	0.04	0.04
Milk	—	0.02	0.02	0.02	0.02	0.01	0.03	0.01	0.02
Cheese	0.03	0.01	-0.01	0.02	0.02	0.01	0.04	0.02	0.01
Ice cream and other dairy products	0.01	0.01	0.02	0.01	0.02	0.02	0.02	0.01	0.02
Bread and cereal products	0.04	0.05	0.04	0.04	0.03	—	—	0.04	0.04
Bread	0.02	0.03	0.03	0.02	0.02	0.01	-0.01	0.03	0.03
Cakes and biscuits	—	0.01	0.02	0.01	-0.02	—	0.01	0.01	—
Breakfast cereals	0.01	0.02	-0.01	0.01	0.01	—	0.01	0.01	0.01
Other cereal products	0.01	-0.01	—	-0.01	0.01	-0.01	-0.01	—	—
Meat and seafoods	0.14	0.08	0.13	0.09	0.10	0.07	-0.02	0.08	0.11
Beef and veal	0.03	0.02	0.03	0.03	0.04	0.01	—	0.04	0.03
Lamb and mutton	0.02	0.02	0.03	0.02	0.03	0.03	0.01	0.02	0.02
Pork	0.01	0.01	0.02	0.01	0.01	0.01	0.01	—	0.01
Poultry	0.01	—	—	0.01	—	-0.04	-0.04	-0.02	—
Bacon and ham	0.02	—	0.03	0.02	0.02	0.06	-0.01	0.02	0.02
Other fresh and processed meat	0.03	0.02	0.01	0.01	0.01	0.01	—	0.01	0.02
Fish and other seafood	0.01	0.01	0.01	—	0.01	0.01	0.01	0.01	0.01
Fruit and vegetables	-0.13	—	-0.01	-0.05	-0.05	-0.11	-0.19	-0.15	-0.07
Fruit	0.06	0.15	0.14	0.04	—	-0.02	-0.08	0.02	0.09
Vegetables	-0.18	-0.16	-0.15	-0.09	-0.06	-0.08	-0.11	-0.17	-0.15
Non-alcoholic drinks and snack food	-0.03	-0.01	-0.04	—	-0.03	-0.08	-0.07	-0.01	-0.02
Soft drinks, waters and juices	-0.03	-0.03	-0.03	—	-0.02	-0.04	-0.07	-0.01	-0.03
Snacks and confectionery	0.01	0.02	-0.01	-0.01	-0.01	-0.04	-0.01	0.01	—
Meals out and take away foods	0.03	0.07	0.04	0.02	0.04	—	0.07	0.08	0.04
Restaurant meals	0.01	0.05	-0.02	-0.01	0.03	—	0.04	0.04	0.02
Take away and fast foods	0.02	0.02	0.06	0.04	0.02	—	0.02	0.05	0.03
Other food	0.02	—	0.02	0.03	—	0.03	0.01	0.01	0.01
Eggs	—	-0.01	0.01	0.02	0.01	—	0.01	—	0.01
Jams, honey and sandwich spreads	—	—	—	—	—	-0.01	—	-0.01	—
Tea, coffee and food drinks	-0.01	-0.02	-0.01	—	-0.01	-0.02	-0.03	-0.01	-0.01
Food additives and condiments	0.01	0.02	0.02	0.02	—	0.01	0.01	0.02	0.01
Fats and oils	0.01	-0.01	—	0.03	—	0.04	0.02	-0.01	—
Food n.e.c.	—	0.01	—	-0.04	—	0.01	0.01	—	-0.01
Alcohol and tobacco	0.10	0.14	0.07	0.14	0.13	0.06	0.12	0.06	0.11
Alcoholic drinks	0.04	0.10	0.01	0.09	0.06	0.01	0.05	0.03	0.06
Beer	0.03	0.03	-0.01	0.08	0.03	0.02	0.03	0.03	0.02
Wine	0.01	0.06	0.01	—	-0.01	—	-0.02	-0.01	0.02
Spirits	—	0.01	0.01	0.01	0.03	-0.01	0.03	0.01	0.01
Tobacco	0.06	0.05	0.06	0.05	0.07	0.05	0.07	0.03	0.05
Clothing and footwear	-0.06	-0.04	-0.06	-0.29	-0.21	-0.19	0.08	-0.10	-0.09
Men's clothing	-0.02	—	0.01	-0.07	-0.07	0.03	0.02	-0.05	-0.02
Men's outerwear	-0.02	-0.01	0.02	-0.03	-0.06	0.01	0.01	-0.04	-0.01
Men's underwear, nightwear and socks	—	—	-0.01	-0.03	-0.01	0.02	0.01	—	-0.01
Women's clothing	-0.04	-0.03	-0.11	-0.21	-0.08	-0.17	0.03	-0.05	-0.06
Women's outerwear	-0.03	-0.02	-0.08	-0.21	-0.08	-0.17	0.03	-0.05	-0.06
Women's underwear, nightwear and hosiery	-0.01	-0.01	-0.02	-0.02	—	-0.01	-0.01	—	-0.01
Children's and infants' clothing	-0.01	-0.02	-0.02	-0.03	-0.02	-0.04	0.03	-0.01	-0.02
Footwear	—	0.01	0.03	-0.03	-0.03	-0.02	-0.01	—	—
Men's footwear	0.01	0.01	—	-0.02	-0.02	-0.01	—	-0.01	—
Women's footwear	—	-0.01	0.02	0.01	-0.02	-0.01	—	—	—
Children's footwear	—	0.01	0.01	—	—	—	—	0.01	—
Clothing accessories, supplies and services	0.02	0.01	0.02	0.06	-0.01	0.02	0.03	—	0.02
Clothing accessories and jewellery	—	—	-0.02	0.02	-0.03	0.01	0.01	—	—
Fabrics and knitting wool	—	0.01	-0.01	0.02	0.01	0.01	0.01	—	0.01
Clothing services and shoe repair	—	0.01	0.05	0.01	—	—	0.01	—	0.01

Group, sub-group and expenditure class	Sydney	Melbourne	Brisbane	Adelaide	Perth	Hobart	Darwin	Canberra	Weighted average of eight capital cities
Housing	0.28	0.69	0.24	0.46	0.24	0.05	0.17	0.37	0.40
Rents	0.06	0.04	0.03	0.04	0.02	0.03	0.04	0.10	0.05
Utilities	0.05	0.31	0.12	0.20	0.06	-0.17	—	0.12	0.14
Electricity	0.03	0.16	0.07	0.09	—	-0.21	—	0.08	0.07
Gas and other household fuels	0.02	0.09	—	0.04	0.04	0.01	—	—	0.04
Water and sewerage	—	0.05	0.04	0.06	0.03	0.02	—	0.04	0.03
Other housing	0.17	0.35	0.09	0.22	0.16	0.20	0.13	0.16	0.21
House purchase	0.06	0.20	0.03	0.09	0.07	0.04	0.02	0.07	0.10
Property rates and charges	0.08	0.09	0.07	0.10	0.05	0.09	0.06	0.06	0.08
House repairs and maintenance	0.03	0.06	0.01	0.04	0.02	0.06	0.04	0.03	0.03
Household furnishings, supplies and services	-0.04	-0.03	-0.04	0.12	-0.08	0.07	0.12	-0.01	-0.03
Furniture and furnishings	-0.04	-0.06	-0.01	-0.01	-0.04	0.06	0.02	-0.02	-0.04
Furniture	-0.01	-0.06	0.02	-0.01	-0.04	0.03	0.01	-0.02	-0.02
Floor and window coverings	—	0.01	0.03	0.01	0.01	0.04	0.03	0.01	0.01
Towels and linen	-0.04	-0.01	-0.06	-0.02	—	-0.01	-0.02	0.01	-0.03
Household appliances, utensils and tools	-0.01	-0.01	-0.05	-0.01	-0.05	—	0.06	-0.02	-0.01
Major household appliances	-0.01	-0.01	-0.02	—	-0.03	—	0.01	-0.01	-0.01
Small electric household appliances	0.01	—	—	-0.01	0.01	—	0.01	—	0.01
Glassware, tableware and household utensils	-0.01	-0.02	-0.03	-0.01	-0.04	—	0.01	-0.01	-0.02
Tools	0.01	—	—	—	0.01	—	0.04	0.01	—
Household supplies	0.01	0.03	0.03	0.08	0.01	—	0.02	0.01	0.02
Household cleaning agents	0.01	—	0.02	—	—	—	—	0.01	0.01
Other household supplies	—	0.03	0.01	0.08	—	—	0.02	0.01	0.02
Household services	—	—	—	0.06	—	0.01	0.01	—	0.01
Health	-0.02	—	0.01	-0.01	—	-0.04	-0.02	—	—
Health services	0.03	0.06	0.06	0.04	0.05	0.03	0.01	0.05	0.05
Hospital and medical services	0.02	0.05	0.04	0.02	0.02	0.02	—	0.05	0.04
Optical services	—	—	—	—	0.01	—	—	-0.01	—
Dental services	0.01	0.01	0.01	0.01	0.02	0.01	—	0.02	0.01
Pharmaceuticals	-0.05	-0.05	-0.05	-0.05	-0.04	-0.07	-0.03	-0.06	-0.05
Transportation	-0.23	-0.48	-0.19	-0.49	-0.41	-0.41	-0.47	-0.66	-0.35
Private motoring	-0.29	-0.48	-0.23	-0.50	-0.42	-0.41	-0.47	-0.69	-0.38
Motor vehicles	0.04	0.01	0.02	0.02	—	0.15	-0.11	0.11	0.02
Automotive fuel	-0.42	-0.56	-0.38	-0.61	-0.54	-0.65	-0.41	-0.62	-0.50
Motor vehicle repair and servicing	0.03	0.05	0.09	0.01	0.04	0.03	0.04	0.05	0.04
Motor vehicle parts and accessories	0.02	0.02	-0.01	0.05	0.01	0.01	0.01	0.05	0.02
Other motoring charges	0.04	0.02	0.04	0.03	0.07	0.04	—	-0.28	0.03
Urban transport fares	0.06	—	0.06	0.02	0.01	—	—	0.03	0.03
Communication	-0.01	-0.01	-0.01	-0.01	—	-0.02	—	-0.02	-0.01
Postal	—	—	—	—	—	—	—	—	—
Telecommunication	—	—	-0.02	-0.01	-0.01	-0.02	—	-0.03	-0.01

<i>Group, sub-group and expenditure class</i>	<i>Sydney</i>	<i>Melbourne</i>	<i>Brisbane</i>	<i>Adelaide</i>	<i>Perth</i>	<i>Hobart</i>	<i>Darwin</i>	<i>Canberra</i>	<i>Weighted average of eight capital cities</i>
Recreation	0.21	0.07	-0.05	0.08	0.27	-0.03	0.55	0.17	0.13
Audio, visual and computing	-0.01	-0.03	0.01	0.01	-0.02	0.01	0.07	-0.01	-0.01
Audio, visual and computing equipment	-0.01	-0.02	0.02	-0.01	-0.02	—	0.05	-0.02	-0.01
Audio, visual and computing media and services	0.01	-0.01	0.01	0.02	-0.01	0.01	0.01	0.01	—
Books, newspapers and magazines	—	0.01	0.01	0.03	0.02	0.03	—	0.02	0.01
Books	—	—	—	0.03	0.02	—	—	0.02	0.01
Newspapers and magazines	—	—	—	—	—	0.02	—	—	—
Sport and other recreation	0.05	0.07	0.01	0.08	0.07	0.06	-0.01	0.03	0.05
Sports and recreational equipment	—	0.01	0.01	0.04	-0.01	0.01	-0.03	0.01	—
Toys, games and hobbies	-0.01	—	-0.05	-0.02	—	-0.01	-0.02	-0.03	-0.01
Sports participation	0.01	0.03	0.01	0.03	0.01	0.02	0.02	0.03	0.01
Pets, pet foods and supplies	0.03	0.02	0.03	0.03	0.03	0.05	0.01	0.03	0.03
Pet services including veterinary	—	—	—	—	—	0.01	—	0.01	—
Other recreational activities	0.02	0.02	0.01	0.01	0.03	—	—	-0.02	0.01
Holiday travel and accommodation	0.16	0.03	-0.07	-0.04	0.21	-0.14	0.50	0.13	0.08
Domestic holiday travel and accommodation	0.06	-0.04	-0.10	-0.16	0.11	-0.15	0.43	0.04	—
Overseas holiday travel and accommodation	0.10	0.07	0.02	0.12	0.09	0.03	0.06	0.10	0.07
Education	—	—	—	—	—	—	—	—	0.01
Preschool and primary education	—	0.01	—	0.01	—	-0.01	—	—	—
Secondary education	—	—	—	—	—	—	—	—	—
Tertiary education	—	—	—	—	—	—	—	—	—
Miscellaneous	0.06	0.05	0.05	0.08	0.07	-0.03	-0.06	-0.08	0.05
Insurance services	0.06	0.07	0.05	0.08	0.06	0.02	-0.02	-0.09	0.05
Personal care	0.05	0.02	0.05	0.01	0.02	0.03	0.01	0.04	0.03
Hairdressing and personal care services	0.01	-0.01	0.01	0.02	0.01	0.01	0.01	0.03	—
Toiletries and personal care products	0.04	0.03	0.03	-0.01	0.02	0.02	0.01	0.02	0.03
Child care	-0.04	-0.03	-0.04	-0.02	-0.02	-0.06	-0.05	-0.02	-0.03
All groups	0.4	0.6	0.2	0.2	0.1	-0.6	0.3	-0.2	0.4

(a) All groups index points.

Group, sub-group and expenditure class	INDEX NUMBERS(a).....			PERCENTAGE CHANGE BETWEEN.....		CONTRIBUTION TO TOTAL CPI (ALL GROUPS INDEX POINTS)		
	Sep Qtr	Jun Qtr	Sep Qtr	Jun Qtr	Sep Qtr	Jun Qtr	Sep Qtr	Change between
	2000	2001	2001	2001 and 2001	2000 and 2001	2001	2001	Jun Qtr 2001 and Sep Qtr 2001
Food	132.4	138.8	139.8	0.7	5.6	23.84	24.00	0.16
Dairy and related products	142.3	143.4	146.6	2.2	3.0	1.89	1.93	0.04
Milk	158.5	154.3	156.2	1.2	-1.5	0.97	0.99	0.02
Cheese	114.5	117.8	121.9	3.5	6.5	0.45	0.46	0.01
Ice cream and other dairy products	139.1	148.4	153.0	3.1	10.0	0.46	0.48	0.02
Bread and cereal products	146.7	152.2	154.4	1.4	5.2	2.92	2.96	0.04
Bread	168.5	177.5	181.7	2.4	7.8	1.09	1.12	0.03
Cakes and biscuits	136.1	141.3	141.7	0.3	4.1	1.20	1.20	—
Breakfast cereals	122.4	121.9	125.4	2.9	2.5	0.31	0.32	0.01
Other cereal products	125.2	128.2	129.1	0.7	3.1	0.33	0.33	—
Meat and seafoods	114.1	125.7	129.5	3.0	13.5	3.59	3.70	0.11
Beef and veal	112.1	128.8	133.0	3.3	18.6	0.77	0.80	0.03
Lamb and mutton	126.4	148.0	156.7	5.9	24.0	0.38	0.40	0.02
Pork	121.9	132.2	138.3	4.6	13.5	0.27	0.28	0.01
Poultry	91.3	97.1	97.7	0.6	7.0	0.63	0.63	—
Bacon and ham	114.4	125.8	132.0	4.9	15.4	0.35	0.37	0.02
Other fresh and processed meat	121.9	135.8	139.8	2.9	14.7	0.60	0.62	0.02
Fish and other seafood	114.4	119.1	121.1	1.7	5.9	0.59	0.60	0.01
Fruit and vegetables	115.2	124.6	122.0	-2.1	5.9	3.10	3.03	-0.07
Fruit	125.4	131.1	139.4	6.3	11.2	1.33	1.42	0.09
Vegetables	109.3	121.3	111.2	-8.3	1.7	1.76	1.61	-0.15
Non-alcoholic drinks and snack food	137.4	142.2	141.1	-0.8	2.7	3.17	3.15	-0.02
Soft drinks, waters and juices	126.5	131.3	129.0	-1.8	2.0	1.63	1.60	-0.03
Snacks and confectionery	151.4	156.2	156.5	0.2	3.4	1.55	1.55	—
Meals out and take away foods	140.6	145.2	146.1	0.6	3.9	6.95	6.99	0.04
Restaurant meals	144.3	147.9	148.9	0.7	3.2	2.87	2.89	0.02
Take away and fast foods	139.2	144.6	145.6	0.7	4.6	4.08	4.11	0.03
Other food	130.0	135.2	135.8	0.4	4.5	2.23	2.24	0.01
Eggs	150.4	158.1	162.6	2.8	8.1	0.16	0.17	0.01
Jams, honey and sandwich spreads	145.0	148.9	148.3	-0.4	2.3	0.23	0.23	—
Tea, coffee and food drinks	135.4	142.2	138.3	-2.7	2.1	0.43	0.42	-0.01
Food additives and condiments	123.7	126.5	131.5	4.0	6.3	0.43	0.44	0.01
Fats and oils	117.0	120.6	121.5	0.7	3.8	0.27	0.27	—
Food n.e.c.	127.6	133.8	133.6	-0.1	4.7	0.71	0.70	-0.01
Alcohol and tobacco	190.2	199.4	201.5	1.1	5.9	10.44	10.55	0.11
Alcoholic drinks	144.7	149.4	150.6	0.8	4.1	6.99	7.05	0.06
Beer	148.2	153.2	154.3	0.7	4.1	3.29	3.31	0.02
Wine	136.3	140.6	141.8	0.9	4.0	2.31	2.33	0.02
Spirits	145.4	149.7	150.9	0.8	3.8	1.39	1.40	0.01
Tobacco	307.3	332.9	338.3	1.6	10.1	3.45	3.50	0.05
Clothing and footwear	113.5	112.5	111.1	-1.2	-2.1	6.97	6.88	-0.09
Men's clothing	116.5	112.5	110.7	-1.6	-5.0	1.30	1.28	-0.02
Men's outerwear	114.7	110.0	108.2	-1.6	-5.7	1.07	1.06	-0.01
Men's underwear, nightwear and socks	126.0	125.8	123.8	-1.6	-1.7	0.23	0.22	-0.01
Women's clothing	117.8	116.7	113.6	-2.7	-3.6	2.44	2.38	-0.06
Women's outerwear	113.1	111.2	108.1	-2.8	-4.4	1.92	1.86	-0.06
Women's underwear, nightwear and hosiery	135.6	138.3	135.1	-2.3	-4.4	0.53	0.52	-0.01
Children's and infants' clothing	118.4	116.3	113.2	-2.7	-4.4	0.65	0.63	-0.02
Footwear	101.6	101.4	101.5	0.1	-0.1	1.13	1.13	—
Men's footwear	96.1	97.4	97.4	—	1.4	0.35	0.35	—
Women's footwear	107.0	105.9	105.5	-0.4	-1.4	0.53	0.53	—
Children's footwear	100.1	99.7	100.9	1.2	0.8	0.25	0.25	—
Clothing accessories, supplies and services(b)	102.5	103.8	105.0	1.2	2.4	1.45	1.47	0.02
Clothing accessories and jewellery(b)	94.7	96.0	96.0	—	1.4	0.79	0.79	—
Fabrics and knitting wool	108.4	108.3	112.8	4.2	4.1	0.15	0.16	0.01
Clothing services and shoe repair	152.4	154.8	157.8	1.9	3.5	0.51	0.52	0.01

Group, sub-group and expenditure class	INDEX NUMBERS(a).....			PERCENTAGE CHANGE BETWEEN.....		CONTRIBUTION TO TOTAL CPI (ALL GROUPS INDEX POINTS)		
	Sep Qtr 2000	Jun Qtr 2001	Sep Qtr 2001	Jun Qtr 2001 and	Sep Qtr 2000 and	Jun Qtr 2001	Sep Qtr 2001	Change between Jun Qtr 2001 and Sep Qtr 2001
				Sep Qtr 2001	Sep Qtr 2001			
Housing	107.4	108.4	110.0	1.5	2.4	26.67	27.07	0.40
Rents	127.9	131.0	131.9	0.7	3.1	7.29	7.34	0.05
Utilities	133.1	132.9	137.2	3.2	3.1	4.43	4.57	0.14
Electricity	129.7	129.9	133.8	3.0	3.2	2.33	2.40	0.07
Gas and other household fuels	142.5	141.6	147.7	4.3	3.6	0.99	1.03	0.04
Water and sewerage(b)	108.0	107.8	110.9	2.9	2.7	1.11	1.14	0.03
Other housing	100.7	101.1	102.6	1.5	1.9	14.95	15.16	0.21
House purchase(b)	120.8	121.0	122.1	0.9	1.1	10.73	10.83	0.10
Property rates and charges(b)	114.2	113.5	119.0	4.8	4.2	1.58	1.66	0.08
House repairs and maintenance	138.1	140.9	142.8	1.3	3.4	2.63	2.66	0.03
Household furnishings, supplies and services	116.4	119.3	118.9	-0.3	2.1	10.67	10.64	-0.03
Furniture and furnishings	125.9	127.6	126.6	-0.8	0.6	4.76	4.72	-0.04
Furniture	128.3	130.1	129.1	-0.8	0.6	3.06	3.04	-0.02
Floor and window coverings	120.1	124.1	125.3	1.0	4.3	0.99	1.00	0.01
Towels and linen	123.2	121.5	117.2	-3.5	-4.9	0.71	0.68	-0.03
Household appliances, utensils and tools	108.4	110.1	109.3	-0.7	0.8	2.57	2.56	-0.01
Major household appliances	108.2	111.3	110.5	-0.7	2.1	1.16	1.15	-0.01
Small electric household appliances	106.4	106.7	107.6	0.8	1.1	0.36	0.37	0.01
Glassware, tableware and household utensils	108.2	107.2	104.3	-2.7	-3.6	0.63	0.61	-0.02
Tools	109.4	112.5	113.5	0.9	3.7	0.42	0.42	—
Household supplies	119.8	126.6	127.8	0.9	6.7	2.46	2.48	0.02
Household cleaning agents	112.0	117.4	118.3	0.8	5.6	0.52	0.53	0.01
Other household supplies	123.4	130.7	132.0	1.0	7.0	1.94	1.96	0.02
Household services	177.0	182.0	183.3	0.7	3.6	0.87	0.88	0.01
Health	162.1	166.7	166.5	-0.1	2.7	6.11	6.11	—
Health services	166.9	170.8	172.5	1.0	3.4	4.62	4.67	0.05
Hospital and medical services	170.6	174.4	176.0	0.9	3.2	3.50	3.54	0.04
Optical services	133.5	134.9	135.7	0.6	1.6	0.21	0.21	—
Dental services	165.9	170.9	173.2	1.3	4.4	0.91	0.92	0.01
Pharmaceuticals	135.4	141.5	136.4	-3.6	0.7	1.49	1.44	-0.05
Transportation	135.6	139.4	137.0	-1.7	1.0	20.30	19.95	-0.35
Private motoring	133.0	136.8	134.1	-2.0	0.8	19.12	18.74	-0.38
Motor vehicles	102.0	105.6	106.0	0.4	3.9	7.46	7.48	0.02
Automotive fuel	156.7	157.9	144.8	-8.3	-7.6	5.97	5.47	-0.50
Motor vehicle repair and servicing	121.9	128.2	130.0	1.4	6.6	2.97	3.01	0.04
Motor vehicle parts and accessories	102.3	107.9	109.7	1.7	7.2	1.29	1.31	0.02
Other motoring charges	169.7	171.0	173.9	1.7	2.5	1.43	1.46	0.03
Urban transport fares	178.3	183.0	187.3	2.3	5.0	1.18	1.21	0.03
Communication	105.6	103.8	103.6	-0.2	-1.9	3.82	3.81	-0.01
Postal	119.3	119.3	119.3	—	—	0.20	0.20	—
Telecommunication	104.0	102.1	101.8	-0.3	-2.1	3.62	3.61	-0.01

Group, sub-group and expenditure class	INDEX NUMBERS(a).....			PERCENTAGE CHANGE BETWEEN.....		CONTRIBUTIONS TO TOTAL CPI (ALL GROUPS INDEX POINTS)		
	Sep Qtr	Jun Qtr	Sep Qtr	Jun Qtr	Sep Qtr	Jun Qtr	Sep Qtr	Change between
	2000	2001	2001	2001 and	2000 and	2001	2001	Jun Qtr 2001 and Sep Qtr 2001
Recreation	124.8	124.3	125.4	0.9	0.5	16.07	16.20	0.13
Audio, visual and computing	70.2	70.0	69.7	-0.4	-0.7	3.29	3.28	-0.01
Audio, visual and computing equipment	53.5	51.9	51.6	-0.6	-3.6	1.52	1.51	-0.01
Audio, visual and computing media and services	102.3	104.5	104.3	-0.2	2.0	1.78	1.78	—
Books, newspapers and magazines	182.5	186.0	187.1	0.6	2.5	1.51	1.52	0.01
Books(b)	113.7	116.3	117.4	0.9	3.3	0.68	0.69	0.01
Newspapers and magazines(b)	118.6	120.4	120.8	0.3	1.9	0.83	0.83	—
Sport and other recreation	145.0	147.5	148.9	0.9	2.7	5.56	5.61	0.05
Sports and recreational equipment(b)	96.3	96.1	97.0	0.9	0.7	0.81	0.81	—
Toys, games and hobbies(b)	92.8	99.0	97.0	-2.0	4.5	0.67	0.66	-0.01
Sports participation(b)	119.7	123.1	124.6	1.2	4.1	1.15	1.16	0.01
Pets, pet foods and supplies	121.5	119.9	126.5	5.5	4.1	0.52	0.55	0.03
Pet services including veterinary	170.7	174.5	175.5	0.6	2.8	0.47	0.47	—
Other recreational activities(b)	118.7	119.8	120.6	0.7	1.6	1.95	1.96	0.01
Holiday travel and accommodation	117.7	114.4	116.0	1.4	-1.4	5.71	5.79	0.08
Domestic holiday travel and accommodation	127.8	118.3	118.5	0.2	-7.3	3.08	3.08	—
Overseas holiday travel and accommodation	105.7	109.2	112.4	2.9	6.3	2.63	2.70	0.07
Education	187.3	195.4	195.4	—	4.3	3.54	3.55	0.01
Preschool and primary education(c)	100.0	104.8	105.0	0.2	5.0	0.67	0.67	—
Secondary education(c)	100.0	106.3	106.3	—	6.3	1.25	1.25	—
Tertiary education(c)	100.3	102.9	102.9	—	2.6	1.62	1.62	—
Miscellaneous	163.5	168.7	170.4	1.0	4.2	5.37	5.42	0.05
Insurance services	212.0	220.9	226.9	2.7	7.0	2.02	2.07	0.05
Personal care	140.6	143.1	144.6	1.0	2.8	2.85	2.88	0.03
Hairdressing and personal care services	154.3	156.8	157.2	0.3	1.9	1.05	1.05	—
Toiletries and personal care products	133.0	135.5	137.6	1.5	3.5	1.80	1.83	0.03
Child care	127.7	137.3	128.5	-6.4	0.6	0.50	0.47	-0.03
All groups	130.9	133.8	134.2	0.3	2.5	133.8	134.2	0.4

(a) Unless otherwise specified, base of each index: 1989-90 = 100.0. (b) Base: June quarter 1998 = 100.0.

(c) Base: June quarter 2000 = 100.0.

SPECIAL SERIES, Weighted Average of Eight Capital Cities

	INDEX NUMBERS(a).....			PERCENTAGE CHANGE BETWEEN.....		CONTRIBUTION TO TOTAL CPI (ALL GROUPS INDEX POINTS)		
	Sep Qtr 2000	Jun Qtr 2001	Sep Qtr 2001	Jun Qtr 2001 and	Sep Qtr 2000 and	Jun Qtr 2001	Sep Qtr 2001	Change between Jun Qtr 2001 and Sep Qtr 2001
				Sep Qtr 2001	Sep Qtr 2001			
All groups	130.9	133.8	134.2	0.3	2.5	133.8	134.2	0.4
Selected components								
Goods component(b)	132.7	136.1	136.0	-0.1	2.5	87.63	87.54	-0.09
Services component(b)	128.3	130.4	131.7	1.0	2.7	46.17	46.63	0.46
Tradables component(b)(c)	105.2	108.4	107.8	-0.6	2.5	62.78	62.39	-0.39
Non-tradables component(b)(c)	110.9	112.6	113.8	1.1	2.6	71.03	71.78	0.75
All groups excluding								
Food	130.5	132.7	133.0	0.2	1.9	109.96	110.17	0.21
Alcohol and tobacco	126.5	129.1	129.4	0.2	2.3	123.36	123.62	0.26
Clothing and footwear	132.1	135.3	135.8	0.4	2.8	126.84	127.29	0.45
Housing	134.9	138.4	138.4	0.0	2.6	107.13	107.10	-0.03
Household furnishings, supplies and services	133.6	136.6	137.0	0.3	2.5	123.13	123.53	0.40
Health	129.1	132.0	132.4	0.3	2.6	127.69	128.07	0.38
Transportation	130.1	132.9	133.7	0.6	2.8	113.50	114.22	0.72
Communication	131.2	134.3	134.7	0.3	2.7	129.98	130.36	0.38
Recreation	131.7	135.1	135.4	0.2	2.8	117.74	117.97	0.23
Education	130.3	133.2	133.5	0.2	2.5	130.26	130.63	0.37
Miscellaneous	129.5	132.4	132.7	0.2	2.5	128.44	128.75	0.31
Hospital and medical services	129.6	132.5	132.9	0.3	2.5	130.30	130.64	0.34

(a) Unless otherwise specified, base of each index:
1989-90 = 100.0

(b) Refer to paragraph 12 of the Explanatory Notes for
a description of this series.

(c) Base: June quarter 1998 = 100.0

MARKET GOODS AND SERVICES
EXCLUDING 'VOLATILE
ITEMS'.....

Period	All groups	All groups excluding Housing	All groups excluding 'volatile items'	Goods	Services	Total	Tradables(c)	Non-tradables(c)
1997-1998	120.3	125.4	127.2	123.5	126.1	124.2
1998-1999	121.8	126.9	129.0	124.9	129.4	126.1	100.4	101.0
1999-2000	124.7	129.4	131.5	127.1	133.8	128.9	102.1	104.0
2000-2001	132.2	136.4	138.7	132.9	144.1	136.0	106.5	111.8
1997								
September	119.7	124.4	126.1	122.8	124.7	123.3
December	120.0	125.2	126.9	123.3	125.6	123.9
1998								
March	120.3	125.7	127.6	123.8	126.7	124.5
June	121.0	126.3	128.2	124.0	127.4	124.9	100.0	100.0
September	121.3	126.6	128.6	124.3	127.7	125.2	100.1	100.5
December	121.9	127.1	129.0	124.5	129.0	125.7	100.2	101.2
1999								
March	121.8	126.7	129.0	125.1	130.1	126.4	100.2	101.0
June	122.3	127.3	129.4	125.7	130.6	126.9	101.0	101.2
September	123.4	128.3	130.2	126.1	132.1	127.7	101.7	102.3
December	124.1	128.6	131.0	126.8	133.4	128.5	101.5	103.5
2000								
March	125.2	129.7	131.9	127.4	134.1	129.2	102.0	104.8
June	126.2	130.8	132.7	128.0	135.5	130.0	103.0	105.5
September	130.9	134.9	137.4	131.5	143.3	134.8	105.2	110.9
December	131.3	135.4	137.7	131.9	143.8	135.2	105.4	111.4
2001								
March	132.7	137.0	139.1	133.3	144.2	136.3	106.9	112.2
June	133.8	138.4	140.4	135.0	145.0	137.7	108.4	112.6
September	134.2	138.4	141.4	135.7	146.4	138.6	107.8	113.8

(a) Unless otherwise specified, base of each index: 1989-90 = 100.0.

(b) Refer to paragraph 12 of the Explanatory Notes for a description of these series.

(c) Base: June quarter 1998 = 100.0.

ANALYTICAL SERIES, Percentage Changes(a)

MARKET GOODS AND SERVICES
EXCLUDING 'VOLATILE
ITEMS'.....

Period	All groups	All groups excluding Housing	All groups excluding 'volatile items'	Goods	Services	Total	Tradables	Non-tradables
PERCENTAGE CHANGE (from previous financial year)								
1997-1998	0.0	1.2	1.6	0.8	3.3	1.5
1998-1999	1.2	1.2	1.4	1.1	2.6	1.5
1999-2000	2.4	2.0	1.9	1.8	3.4	2.2	1.7	3.0
2000-2001	6.0	5.4	5.5	4.6	7.7	5.5	4.3	7.5
PERCENTAGE CHANGE (from corresponding quarter of previous year)								
1997								
September	-0.3	1.4	1.6	0.5	3.6	1.3
December	-0.2	1.3	1.7	0.7	3.3	1.3
1998								
March	-0.2	1.0	1.6	1.0	3.2	1.5
June	0.7	1.2	1.7	1.0	3.2	1.5
September	1.3	1.8	2.0	1.2	2.4	1.5
December	1.6	1.5	1.7	1.0	2.7	1.5
1999								
March	1.2	0.8	1.1	1.1	2.7	1.5
June	1.1	0.8	0.9	1.4	2.5	1.6	1.0	1.2
September	1.7	1.3	1.2	1.4	3.4	2.0	1.6	1.8
December	1.8	1.2	1.6	1.8	3.4	2.2	1.3	2.3
2000								
March	2.8	2.4	2.2	1.8	3.1	2.2	1.8	3.8
June	3.2	2.7	2.6	1.8	3.8	2.4	2.0	4.2
September	6.1	5.1	5.5	4.3	8.5	5.6	3.4	8.4
December	5.8	5.3	5.1	4.0	7.8	5.2	3.8	7.6
2001								
March	6.0	5.6	5.5	4.6	7.5	5.5	4.8	7.1
June	6.0	5.8	5.8	5.5	7.0	5.9	5.2	6.7
September	2.5	2.6	2.9	3.2	2.2	2.8	2.5	2.6
PERCENTAGE CHANGE (from previous quarter)								
1997								
September	-0.4	-0.3	0.0	0.0	1.1	0.2
December	0.3	0.6	0.6	0.4	0.7	0.5
1998								
March	0.3	0.4	0.6	0.4	0.9	0.5
June	0.6	0.5	0.5	0.2	0.6	0.3
September	0.2	0.2	0.3	0.2	0.2	0.2	0.1	0.5
December	0.5	0.4	0.3	0.2	1.0	0.4	0.1	0.7
1999								
March	-0.1	-0.3	0.0	0.5	0.9	0.6	0.0	-0.2
June	0.4	0.5	0.3	0.5	0.4	0.4	0.8	0.2
September	0.9	0.8	0.6	0.3	1.1	0.6	0.7	1.1
December	0.6	0.2	0.6	0.6	1.0	0.6	-0.2	1.2
2000								
March	0.9	0.9	0.7	0.5	0.5	0.5	0.5	1.3
June	0.8	0.8	0.6	0.5	1.0	0.6	1.0	0.7
September	3.7	3.1	3.5	2.7	5.8	3.7	2.1	5.1
December	0.3	0.4	0.2	0.3	0.3	0.3	0.2	0.5
2001								
March	1.1	1.2	1.0	1.1	0.3	0.8	1.4	0.7
June	0.8	1.0	0.9	1.3	0.6	1.0	1.4	0.4
September	0.3	0.0	0.7	0.5	1.0	0.7	-0.6	1.1

(a) Refer to paragraph 12 of the Explanatory Notes for a description of these series.

INTERNATIONAL COMPARISONS, All Groups Excluding Housing—Index Numbers(a)(b)

Period	Australia	New Zealand	Hong Kong(c)	Indonesia	Japan	Korea, Republic of	Singapore	Taiwan	Canada	United States of America	Germany	United Kingdom
1997-1998	125.4	114.9	173.9	232.7	112.4	162.1	119.4	127.2	120.6	125.8	120.3	134.6
1998-1999	126.9	116.9	172.0	368.3	112.4	169.0	118.5	128.2	122.0	127.2	120.7	137.2
1999-2000	129.4	118.7	166.6	367.1	111.6	172.1	120.7	129.3	125.0	130.9	121.8	139.3
2000-2001	136.4	123.5	164.8	402.6	111.0	179.2	123.0	130.9	128.1	135.3	124.2	141.4
1997												
September	124.4	114.5	172.2	183.3	112.3	155.4	119.9	127.6	120.3	125.3	120.3	133.5
December	125.2	114.9	173.7	195.7	112.5	157.9	120.0	125.7	120.1	125.9	119.9	134.3
1998												
March	125.7	115.0	173.7	254.5	112.0	167.3	119.1	127.1	120.9	125.6	120.2	134.5
June	126.3	115.3	175.8	297.4	112.6	167.7	118.7	128.2	121.2	126.3	120.7	136.1
September	126.6	116.4	175.1	360.6	111.9	167.8	118.3	128.0	121.4	126.4	121.0	136.1
December	127.1	116.5	173.5	363.2	113.2	168.9	117.8	129.9	121.4	126.8	120.5	136.9
1999												
March	126.7	117.1	170.2	377.9	111.9	169.2	118.4	127.5	121.7	127.1	120.4	137.1
June	127.3	117.6	169.3	371.3	112.4	169.9	119.3	127.5	123.4	128.4	120.9	138.6
September	128.3	117.8	167.7	360.3	111.9	170.1	120.2	128.4	124.4	129.2	121.3	138.4
December	128.6	118.2	167.2	367.5	111.9	172.3	120.2	129.6	124.5	130.2	121.2	139.1
2000												
March	129.7	118.9	165.7	370.7	111.1	172.9	121.2	128.9	124.9	131.3	122.2	139.1
June	130.8	119.8	165.9	369.7	111.4	172.9	121.0	130.3	126.2	132.8	122.4	140.7
September	134.9	121.8	165.4	376.7	111.0	176.1	122.2	131.3	127.3	133.7	123.2	140.5
December	135.4	123.4	165.5	403.3	111.2	177.6	122.8	132.4	127.5	134.6	123.0	141.2
2001												
March	137.0	123.8	163.7	406.1	110.9	180.6	123.5	129.8	127.9	135.7	124.5	140.9
June	138.4	125.1	164.4	424.4	110.8	182.5	123.3	129.9	129.8	137.1	125.9	143.0
September	138.4	125.8	n.y.a.	435.3	n.y.a.	183.7	n.y.a.	130.4	130.1	136.7	126.0	142.9

(a) Base of each index: 1989–90 = 100.0.

(b) Refer to paragraphs 14–16 of the Explanatory Notes for further information.

(c) Series revised, refer to *Changes in this Issue* on Page 2 for further information

INTERNATIONAL COMPARISONS, All Groups Excluding Housing—Percentage Changes(a)

Period	Australia	New Zealand	Hong Kong (b)	Indonesia	Japan	Korea, Republic of	Singapore	Taiwan	Canada	United States of America	Germany	United Kingdom
PERCENTAGE CHANGE (from previous financial year)												
1997-1998	1.2	1.1	3.8	33.7	3.9	7.1	1.1	1.2	1.5	1.2	1.8	2.4
1998-1999	1.2	1.7	-1.1	58.3	0.0	4.3	-0.8	0.8	1.2	1.1	0.3	1.9
1999-2000	2.0	1.5	-3.1	-0.3	-0.7	1.8	1.9	0.9	2.5	2.9	0.9	1.5
2000-2001	5.4	4.0	-1.1	9.7	-0.5	4.1	1.9	1.2	2.5	3.4	2.0	1.5
PERCENTAGE CHANGE (from corresponding quarter of previous year)												
1997												
September	1.4	1.3	4.7	8.8	4.7	3.9	2.2	1.2	2.4	1.8	2.0	2.5
December	1.3	1.0	3.8	13.1	4.7	5.6	2.0	-0.5	1.4	1.5	2.0	2.4
1998												
March	1.0	1.0	3.4	43.7	4.5	9.8	0.6	1.9	1.4	0.7	1.3	2.2
June	1.2	1.1	3.0	67.4	1.7	9.0	-0.1	2.0	1.2	1.0	1.6	2.5
September	1.8	1.7	1.7	96.7	-0.4	8.0	-1.3	0.3	0.9	0.9	0.6	1.9
December	1.5	1.4	-0.1	85.6	0.6	7.0	-1.8	3.3	1.1	0.7	0.5	1.9
1999												
March	0.8	1.8	-2.0	48.5	-0.1	1.1	-0.6	0.3	0.7	1.2	0.2	1.9
June	0.8	2.0	-3.7	24.8	-0.2	1.3	0.5	-0.5	1.8	1.7	0.2	1.8
September	1.3	1.2	-4.2	-0.1	0.0	1.4	1.6	0.3	2.5	2.2	0.2	1.7
December	1.2	1.5	-3.6	1.2	-1.1	2.0	2.0	-0.2	2.6	2.7	0.6	1.6
2000												
March	2.4	1.5	-2.6	-1.9	-0.7	2.2	2.4	1.1	2.6	3.3	1.5	1.5
June	2.7	1.9	-2.0	-0.4	-0.9	1.8	1.4	2.2	2.3	3.4	1.2	1.5
September	5.1	3.4	-1.4	4.6	-0.8	3.5	1.7	2.3	2.3	3.5	1.6	1.5
December	5.3	4.4	-1.0	9.7	-0.6	3.1	2.2	2.2	2.4	3.4	1.5	1.5
2001												
March	5.6	4.1	-1.2	9.5	-0.2	4.5	1.8	0.7	2.4	3.4	1.9	1.3
June	5.8	4.4	-0.9	14.8	-0.5	5.6	1.9	-0.3	2.9	3.2	2.9	1.6
September	2.6	3.3	n.y.a.	15.6	n.y.a.	4.3	n.y.a.	-0.7	2.2	2.2	2.3	1.7
PERCENTAGE CHANGE (from previous quarter)												
1997												
September	-0.3	0.4	0.9	3.2	1.4	1.0	0.9	1.5	0.4	0.2	1.3	0.5
December	0.6	0.3	0.9	6.8	0.2	1.6	0.1	-1.5	-0.2	0.5	-0.3	0.6
1998												
March	0.4	0.1	0.0	30.0	-0.4	6.0	-0.8	1.1	0.7	-0.2	0.3	0.1
June	0.5	0.3	1.2	16.9	0.5	0.2	-0.3	0.9	0.2	0.6	0.4	1.2
September	0.2	1.0	-0.4	21.3	-0.6	0.1	-0.3	-0.2	0.2	0.1	0.2	0.0
December	0.4	0.1	-0.9	0.7	1.2	0.7	-0.4	1.5	0.0	0.3	-0.4	0.6
1999												
March	-0.3	0.5	-1.9	4.0	-1.1	0.2	0.5	-1.8	0.2	0.2	-0.1	0.1
June	0.5	0.4	-0.5	-1.7	0.4	0.4	0.8	0.0	1.4	1.0	0.4	1.1
September	0.8	0.2	-0.9	-3.0	-0.4	0.1	0.8	0.7	0.8	0.6	0.3	-0.1
December	0.2	0.3	-0.3	2.0	0.0	1.3	0.0	0.9	0.1	0.8	-0.1	0.5
2000												
March	0.9	0.6	-0.9	0.9	-0.7	0.3	0.9	-0.5	0.3	0.8	0.8	0.0
June	0.8	0.8	0.1	-0.3	0.3	0.0	-0.2	1.1	1.0	1.1	0.2	1.2
September	3.1	1.7	-0.3	1.9	-0.4	1.9	1.0	0.8	0.9	0.7	0.7	-0.1
December	0.4	1.3	0.1	7.1	0.2	0.9	0.5	0.8	0.2	0.7	-0.2	0.5
2001												
March	1.2	0.3	-1.1	0.7	-0.3	1.7	0.5	-2.0	0.3	0.8	1.2	-0.2
June	1.0	1.1	0.4	4.5	-0.1	1.1	-0.2	0.1	1.5	1.0	1.1	1.5
September	0.0	0.6	n.y.a.	2.6	n.y.a.	0.7	n.y.a.	0.4	0.2	-0.3	0.1	-0.1

(a) Refer to paragraphs 14-16 of the Explanatory Notes for further information.

(b) Series revised, refer to *Changes in this Issue* on page 2 for further information.

EXPLANATORY NOTES

BRIEF DESCRIPTION OF THE CPI

1 The Consumer Price Index (CPI) measures quarterly changes in the price of a 'basket' of goods and services which account for a high proportion of expenditure by the CPI population group (i.e. metropolitan households). This 'basket' covers a wide range of goods and services, arranged in the following eleven groups:

- food
- alcohol and tobacco
- clothing and footwear
- housing
- household furnishings, supplies and services
- health
- transportation
- communication
- recreation
- education
- miscellaneous.

2 The capital city indexes measure price movements over time in each city individually. They do not measure differences in retail price levels between cities.

3 Further information about the CPI is contained in the booklet *A Guide to the Consumer Price Index, 14th Series* (Cat. no. 6440.0) which is available on the ABS Website at www.abs.gov.au, or from the ABS on request.

PRICES

4 The frequency of price collection by item varies as necessary to obtain reliable price measures. Prices of some items are volatile (i.e. their prices may vary many times each quarter) and for these items frequent price observations are necessary to obtain a reliable measure of the average price for the quarter. Each month prices are collected at regular intervals for goods such as milk, bread, fresh meat and seafood, fresh fruit and vegetables, petrol, alcohol and tobacco and holiday travel and accommodation. For most other items, price volatility is not a problem and prices are collected once a quarter. There are a few items where prices are changed at infrequent intervals, for example education fees where prices are set once a year. In these cases, the frequency of price collection is modified accordingly.

5 In order to facilitate a more even spread of field collection workload the bulk of the items for which prices are collected quarterly are priced in the first two months of each quarter (i.e. July/August, October/November, January/February, April/May). With a few exceptions items priced in the third month are those subject to price changes at discrete points of time (e.g. electricity and postal charges); in these cases information about any changes in price during the quarter is obtained so that an average price for the whole quarter can be calculated.

WEIGHTING PATTERN

6 There are 89 expenditure classes (that is, groupings of like items) in the fourteenth series CPI and each expenditure class has its own weight, or measure of relative importance. In calculating the index, price changes for the various expenditure classes are combined using these weights.

7 Changes in the weighting pattern have been made at approximately five-yearly intervals to take account of changes in household spending patterns. The CPI now comprises fourteen series of price indexes which have been linked to form a continuous series. The current weighting pattern for the CPI is given in *A Guide to the Consumer Price Index, 14th Series* (Cat. no. 6440.0).

EXPLANATORY NOTES

ANALYSIS OF CPI CHANGES

8 Movements in indexes from one period to another can be expressed either as changes in index points or as percentage changes. The following example illustrates the method of calculating changes in index points and percentage changes between any two periods:

All groups CPI: Weighted average of eight capital cities.

	Index numbers:	
September Quarter 2001	134.2	(see Table 1)
<i>less</i> June Quarter 2001	133.8	(see Table 1)
Change in index points	0.4	
Percentage change = $\frac{0.4}{133.8} \times 100 = 0.3\%$		

9 Percentage changes are calculated to illustrate three different kinds of movements in index numbers:

- movements between consecutive financial years (where the index numbers for financial years are simple averages of the quarterly index numbers),
- movements between corresponding quarters of consecutive years, and
- movements between consecutive quarters.

10 Table 7 provides a detailed analysis, for the weighted average of eight capital cities, of movements in the CPI since the previous quarter, including information on movements for groups, sub-groups and expenditure classes. It also shows the contribution which each makes to the total CPI. For instance, the dairy and related products sub-group contributed 1.93 index points to the total All groups index number of 134.2 for September Quarter 2001. The final column shows contributions to the change in All Groups index points by each group, sub-group and expenditure class.

SPECIAL SERIES

11 Various series are presented in Tables 8, 9 and 10 in this publication which are helpful for analytical purposes. These series are compiled by taking subsets of the CPI basket. (A complete list of CPI groups, subgroups and expenditure classes is contained in Tables 6 and 7.)

12 Some of the compiled series are self explanatory, such as 'All groups excluding Food'. Other series and their composition are described below:

All groups, goods component: comprises the Food group (except Restaurant meals), Alcohol and tobacco group, Clothing and footwear group (except Clothing services and shoe repair) and Household furnishings, supplies and services group (except Household services); the Utilities, Audio, visual and computing and Books, newspapers and magazines sub-groups; and the House purchase, Pharmaceuticals, Motor vehicles, Automotive fuel, Motor vehicle parts and accessories, Sports and recreational equipment, Toys, games and hobbies, Pets, pet foods and supplies and Toiletries and personal care products expenditure classes.

All groups, services component: comprises all items not included in the 'All groups, goods component'.

All groups, tradables component: comprises all items whose prices are largely determined on the world market.

All groups, non-tradables component: comprises all items not included in the 'All groups, tradables component'.

All groups excluding 'volatile items': comprises the All groups CPI excluding Fruit and vegetables and Automotive fuel.

EXPLANATORY NOTES

SPECIAL SERIES *continued*

Market goods and services excluding 'volatile items': in addition to the items excluded from the series "All groups excluding 'volatile items'", also excludes: Utilities, Property rates and charges, Health, Other motoring charges, Urban transport fares, Postal, Education and Child care.

13 A detailed description of the special and analytical series was published in Appendix 1 to the September quarter 2000 issue of *Consumer Price Index, Australia* (Cat. no. 6401.0). The ABS is grateful for the assistance of the Reserve Bank of Australia for specifying the items included in the "All groups excluding 'volatile items'" and "Market goods and services excluding 'volatile items'". The Reserve Bank of Australia does not accord any special policy status to these series.

INTERNATIONAL COMPARISONS

14 In analysing price movements in Australia, an important consideration is Australia's performance relative to other countries. However, due to the many differences in the structure of the housing sector in different countries and in the way that housing is treated in their CPIs, a simple comparison of All groups (or headline) CPIs is often inappropriate. To provide a better basis for international comparisons, the Fourteenth International Conference of Labour Statisticians adopted a resolution which called for countries to 'provide for dissemination at the international level of an index which excludes shelter, in addition to the all-items index'.

15 Table 11 presents indexes for selected countries on a basis consistent with the above resolution and broadly comparable to the Australian series 'All groups excluding Housing'. To facilitate comparisons all indexes in this table have been converted, where necessary, to a quarterly basis and re-referenced to a base of 1989–90 = 100.0.

16 In producing Table 11, the ABS is grateful for the assistance of the relevant national statistical agencies which have either directly supplied indexes for all items excluding shelter or data to enable their derivation.

RELATED PUBLICATIONS

17 Current publications produced by the ABS are listed in the Catalogue of Publications and Products, Australia (Cat. no. 1101.0). The ABS also issues, on Tuesdays and Fridays, a Release Advice (Cat. no. 1105.0) which lists publications to be released in the next few days. The Catalogue and Release Advice are available from any ABS office.

18 Users may also wish to refer to the following publications:

- *A Guide to the Consumer Price Index, 14th Series* (Cat. no. 6440.0)
- *Average Retail Prices of Selected Items, Eight Capital Cities* (Cat. no. 6403.0)
- *House Price Indexes: Eight Capital Cities* (Cat. no. 6416.0)
- *Information Paper: Price Indexes and the New Tax System* (Cat. no. 6425.0)
- *Information Paper: Introduction of the 14th Series Australian Consumer Price Index* (Cat. no. 6456.0).

ABS DATA AVAILABLE ON REQUEST

19 As well as the statistics included in this and related publications, the ABS may have other relevant data available on request. Inquiries should be made to Steve Whennan on 02 6252 6251 or to the National Information and Referral Service on 1300 135 070.

SYMBOLS AND OTHER USAGES

— nil or rounded to zero
.. not applicable
n.a. not available
n.y.a. not yet available
r revised
n.e.c. not elsewhere classified

FOR MORE INFORMATION...

- INTERNET* **www.abs.gov.au** the ABS web site is the best place to start for access to summary data from our latest publications, information about the ABS, advice about upcoming releases, our catalogue, and Australia Now—a statistical profile.
- LIBRARY* A range of ABS publications is available from public and tertiary libraries Australia-wide. Contact your nearest library to determine whether it has the ABS statistics you require, or visit our web site for a list of libraries.
- CPI INFOLINE* For current and historical Consumer Price Index data, call 1902 981 074 (call cost 77c per minute).
- DIAL-A-STATISTIC* For the latest figures for National Accounts, Balance of Payments, Labour Force, Average Weekly Earnings, Estimated Resident Population and the Consumer Price Index call 1900 986 400 (call cost 77c per minute).

INFORMATION SERVICE

Data which have been published and can be provided within five minutes are free of charge. Our information consultants can also help you to access the full range of ABS information—ABS user-pays services can be tailored to your needs, time frame and budget. Publications may be purchased. Specialists are on hand to help you with analytical or methodological advice.

- PHONE* **1300 135 070**
- EMAIL* **client.services@abs.gov.au**
- FAX* 1300 135 211
- POST* Client Services, ABS, GPO Box 796, Sydney 1041

WHY NOT SUBSCRIBE?

ABS subscription services provide regular, convenient and prompt deliveries of ABS publications and products as they are released. Email delivery of monthly and quarterly publications is available.

- PHONE* 1300 366 323
- EMAIL* subscriptions@abs.gov.au
- FAX* 03 9615 7848
- POST* Subscription Services, ABS, GPO Box 2796Y, Melbourne 3001



2640100009015
ISSN 1442-3987

RRP \$19.50